



Lymington Drive, Longford, CV6 6TA

**SHELDON
BOSLEY
KNIGHT**

LAND AND
PROPERTY
PROFESSIONALS

Property Description

CALLING FIRST TIME BUYERS

We are delighted to present this well presented three bedroom, mid-terrace home. Situated in Longford, Coventry this property offers an ideal opportunity for first time buyers or investors.

Briefly comprising; Entrance hallway, kitchen, downstairs W/C, living/dining room, access to the integrated garage, three bedrooms, and bathroom. The exterior offers off road parking for two vehicles, access to the garage, beautiful garden space with access to the rear.

This property is a must see and highly recommended for viewings, with minimum work required having replacement windows and a new boiler within the last decade - this home is ready for your furniture to be dropped in! EPC RATING C & COUNCIL TAX BAND C



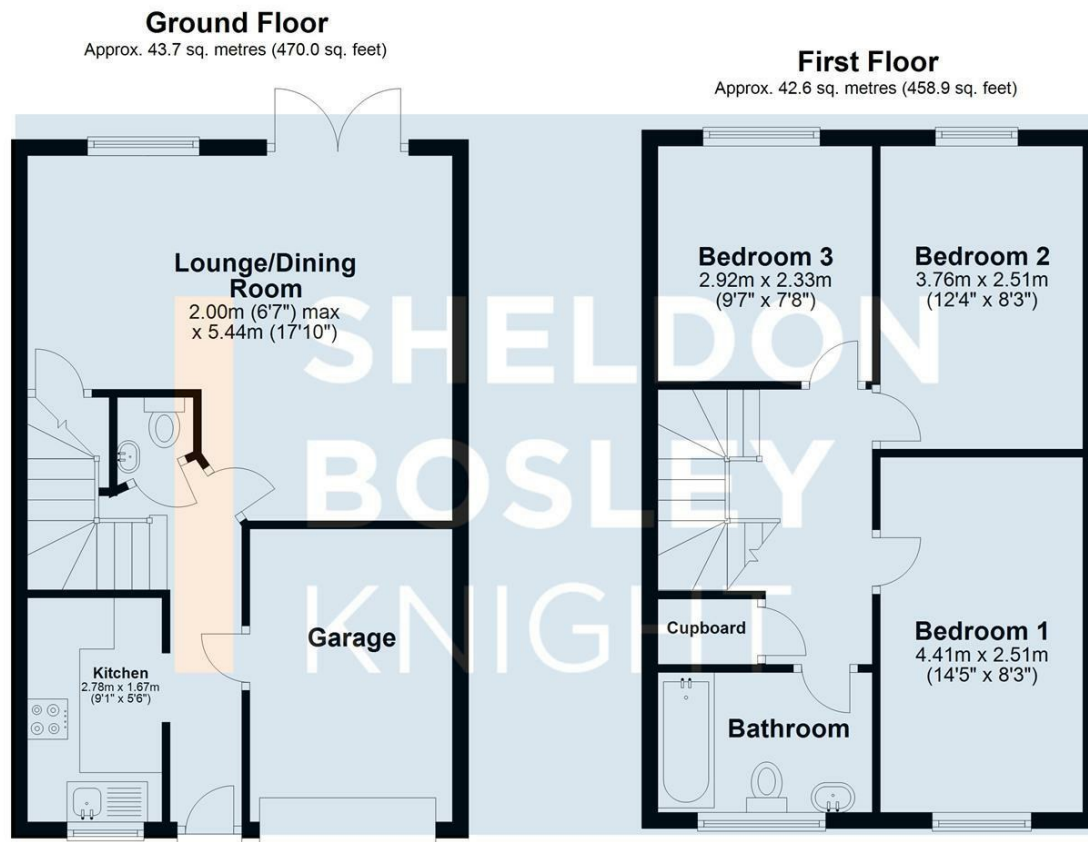


Key Features

- Mid-Terrace Home
- Three Bedrooms
- Downstairs W/C Facilities
- Off Road Parking
- Garage
- Easy Access to the M6, Coventry & Bedworth
- Ideal First time Purchase
- EPC RATING C & Council Tax Band C

£225,000





Total area: approx. 86.3 sq. metres (928.8 sq. feet)

All efforts have been made to ensure that the measurements on this floorplan are accurate however these are for guidance purposes only.
Plan produced using PlanUp.



EPC Rating - C

Tenure - Freehold

Council Tax Band - C

Local Authority



We routinely refer clients to both our recommended legal firm and a panel of financial services providers. It is your decision whether you choose to deal with these companies. In making that decision, you should know that we receive a referral fee.

**SHELDON
BOSLEY
KNIGHT**

LAND AND
PROPERTY
PROFESSIONALS